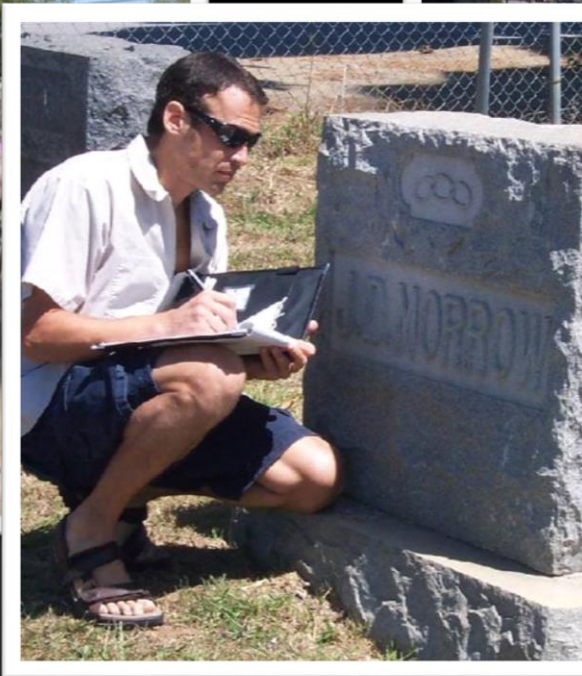
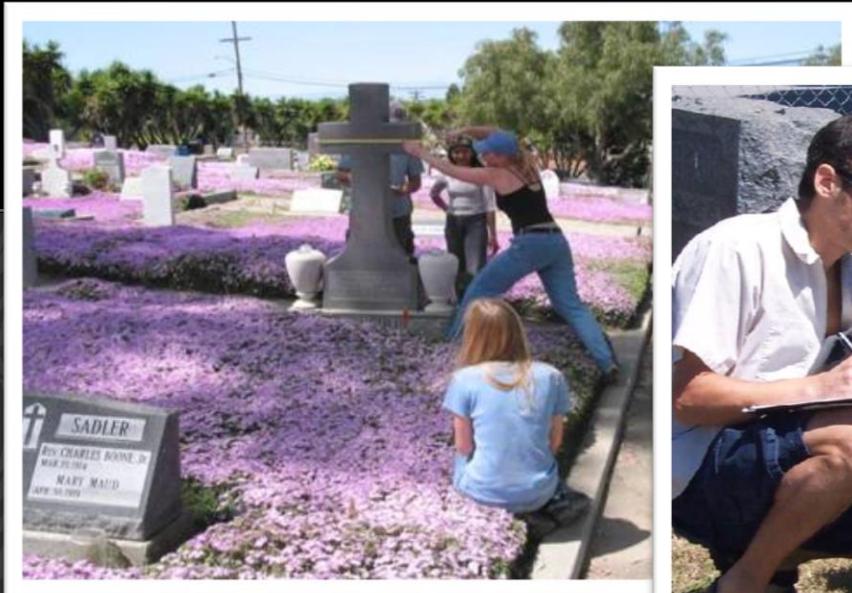
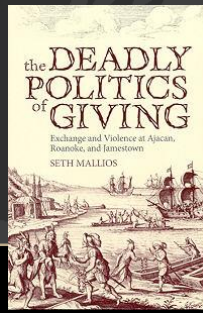


THE SAN DIEGO GRAVESTONE PROJECT



Dr. Seth Mallios
Chair of Anthropology
San Diego State University

OVERVIEW: THE HISTORICAL ARCHAEOLOGY OF LEGEND



- Anthropological analysis of local mortuary culture
- Simultaneous study of San Diego's dead and how modern San Diegans treat them
- Research and historic preservation: grave markers are a nonrenewable cultural resource
- Today: temporal, spatial, and formal trends analyzed through our gravestone GIS

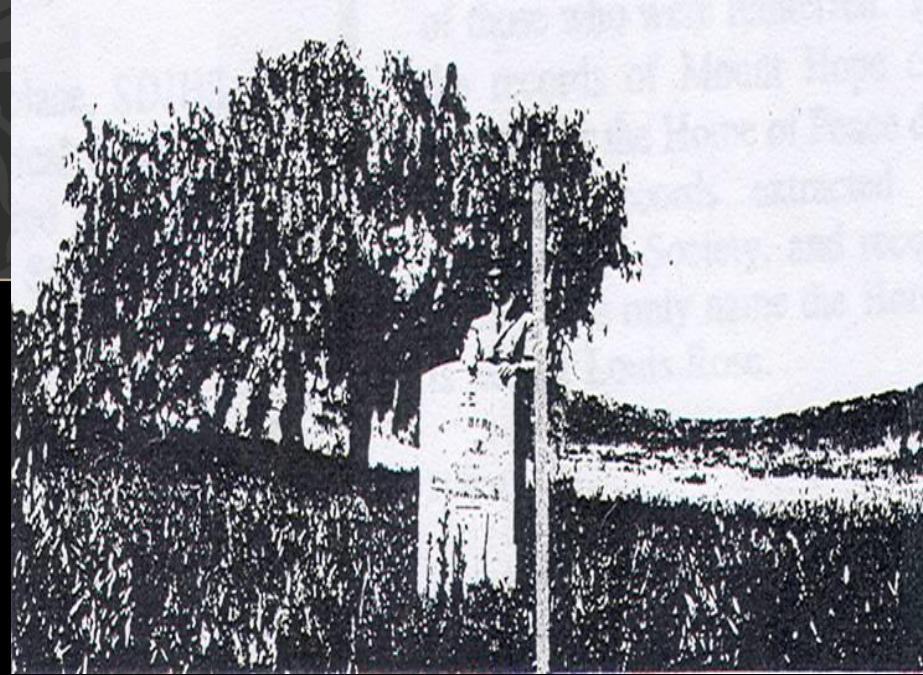


Henry Lukeman's
bronze Angel of Death
at Greenwood Cemetery

FINDING LOST CEMETERIES

- 1982 *Journal of San Diego History* article lists the county's 38 cemeteries
- We have found 112 additional cemeteries!
- Old maps, photographs, survey, word of mouth, etc.

**Just off Midway Drive in the
Roseville neighborhood**



**Then (1930) and Now (2013):
San Diego's 1st Jewish Cemetery**



CHRONOLOGY OF SAN DIEGO CEMETERIES

Prehistoric cremations: 7-10,000 year indigenous periods

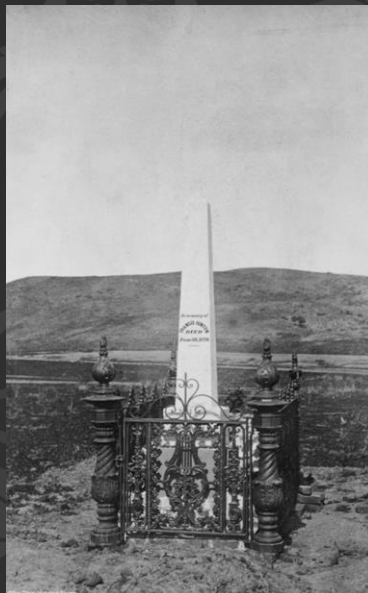
Mission & Indian cemeteries: 1769-1847 Spanish, Mexican periods, & later

Pioneer cemeteries: 1848-1907 Early American and Victorian periods

Mega-cemeteries: 1908-now Expansion and Modern periods



Mission San Diego de Alcalá



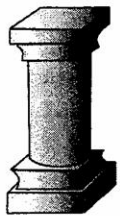
Protestant Cemetery



Mount Hope Cemetery

CHANGE IN GRAVESTONE TYPE OVER TIME

Mt. Hope Cemetery



Total Column



Total Tablet



Slant Marker



Bevel Marker



Raised Top



Flush Marker

1951-1960



1941-1950



1931-1940



1921-1930



1911-1920



1901-1910



1891-1900



- Six general types
- How to read
- Shorter over time
- Decade of 1910s is key

1880-1914: MONUMENTALISM



Fallbrook
OddFellows
Cemetery

La Vista Cemetery

San Luis Rey Cemetery

1915-1960: MODERN PLAIN

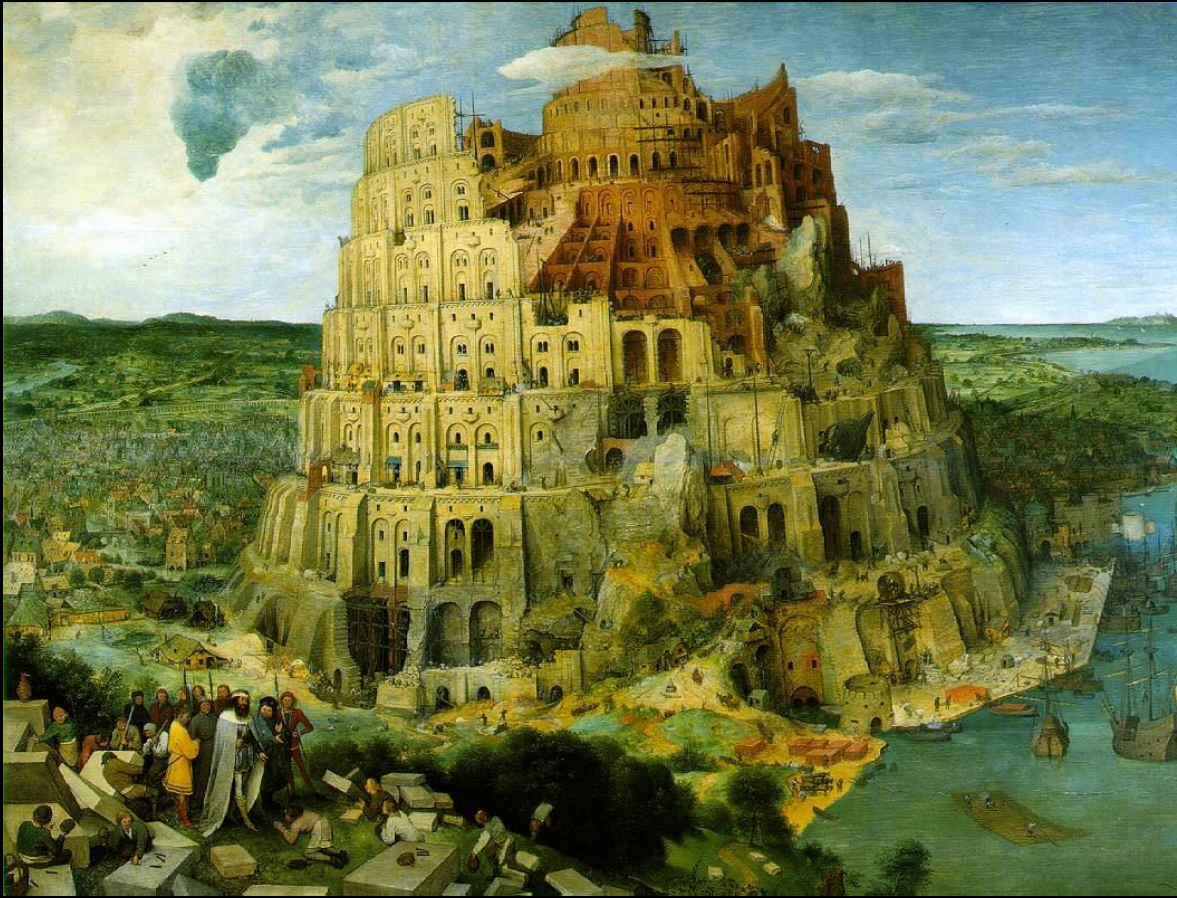


La Vista Cemetery

Oceanview Cemetery



TOWER OF BABEL PARALLEL



- Castigated humility following arrogance

-1910s

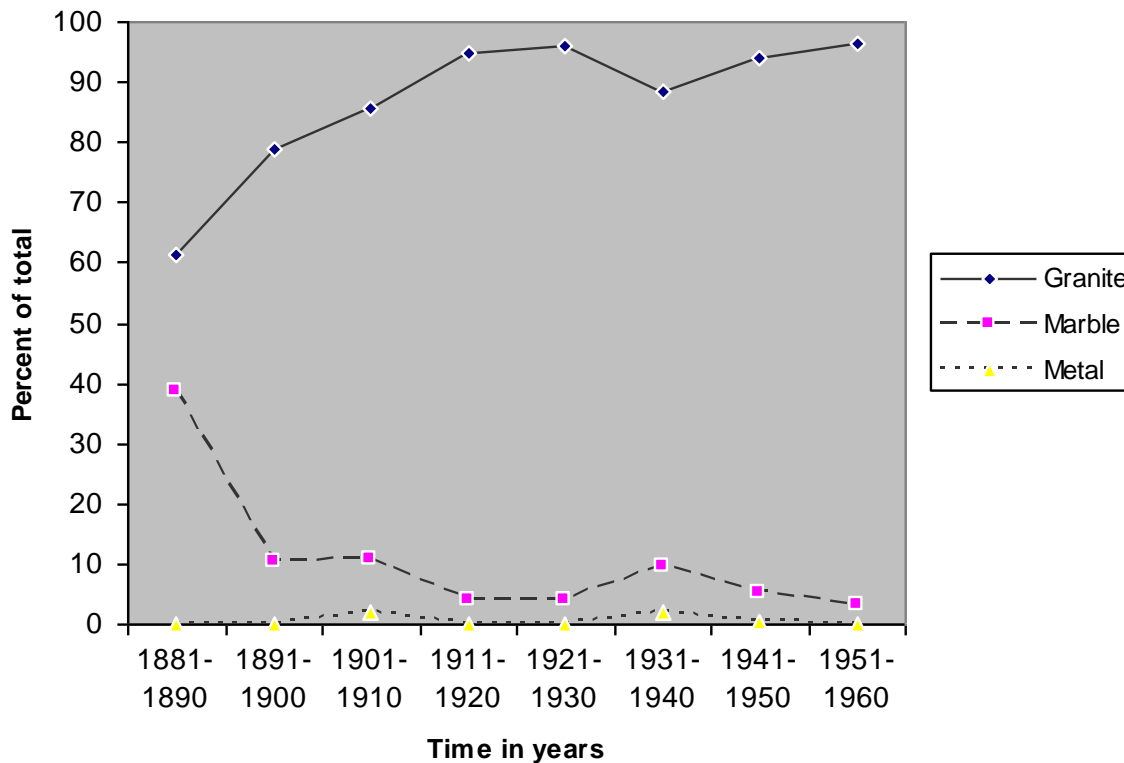
-WWI

-Influenza epidemic

- Victorian celebration of death is gone (cremation, literature, etc.)

GRAVE-MARKER ANALYSIS: BAR GRAPH

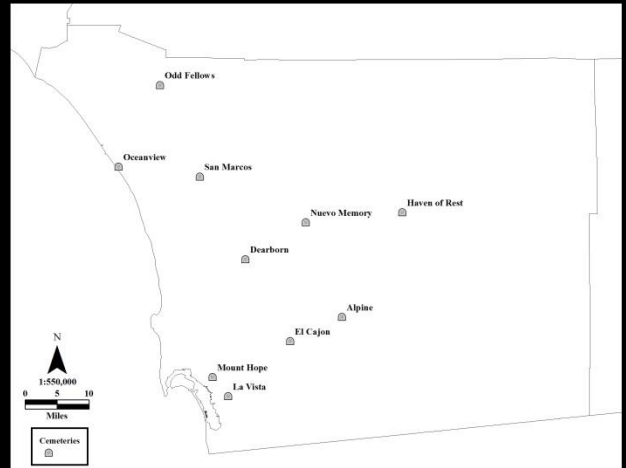
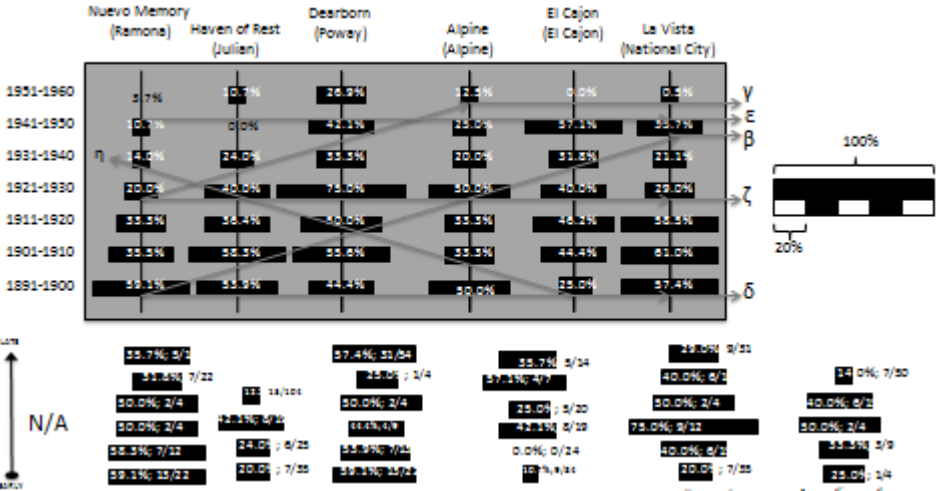
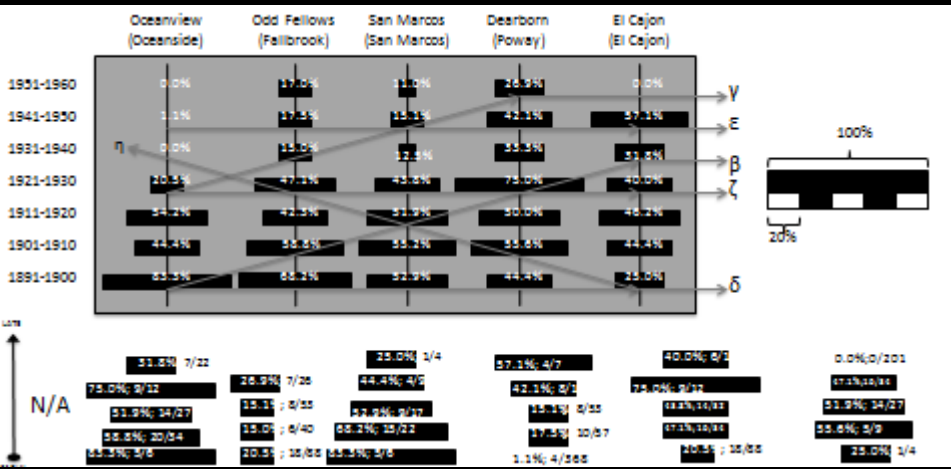
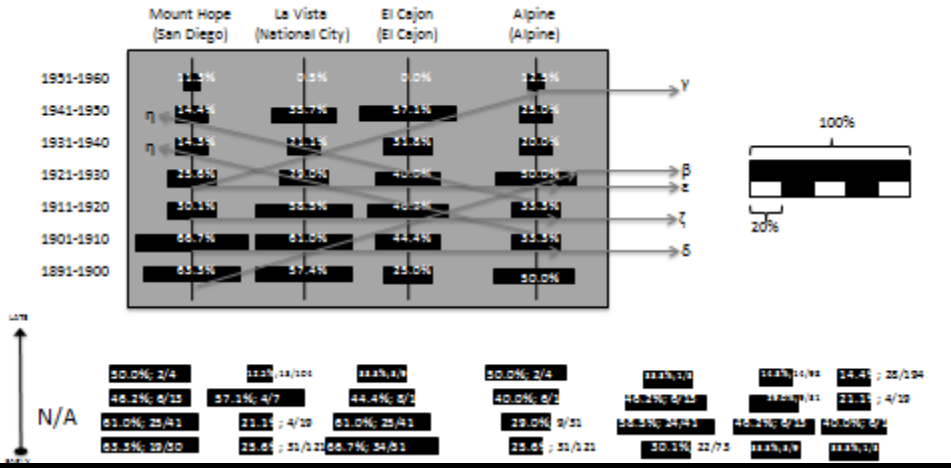
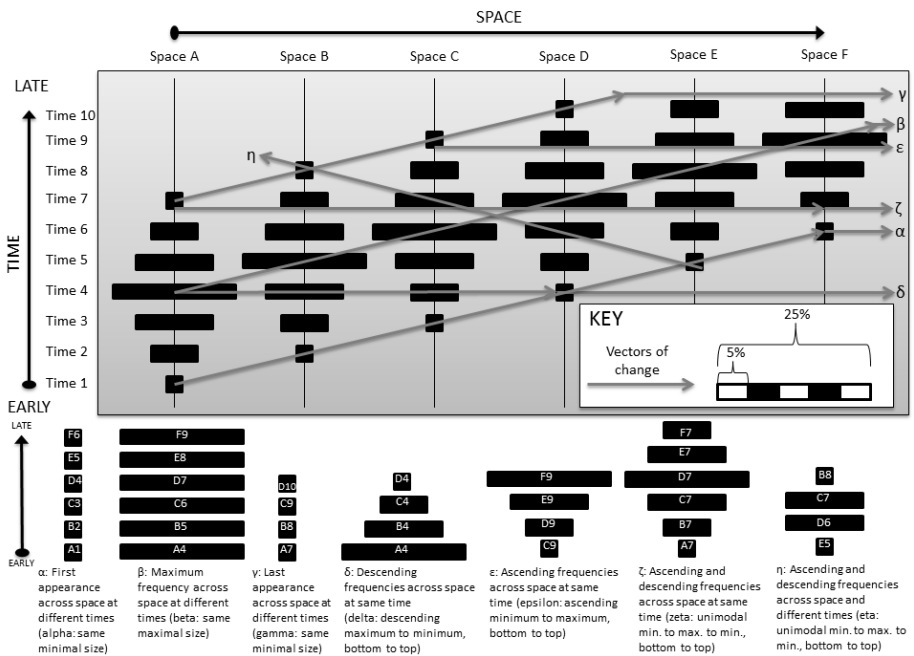
Grave marker material over time



- Granite more durable (\$)
- Both non-granite peaks match economic hardship
- Social types and economic materials

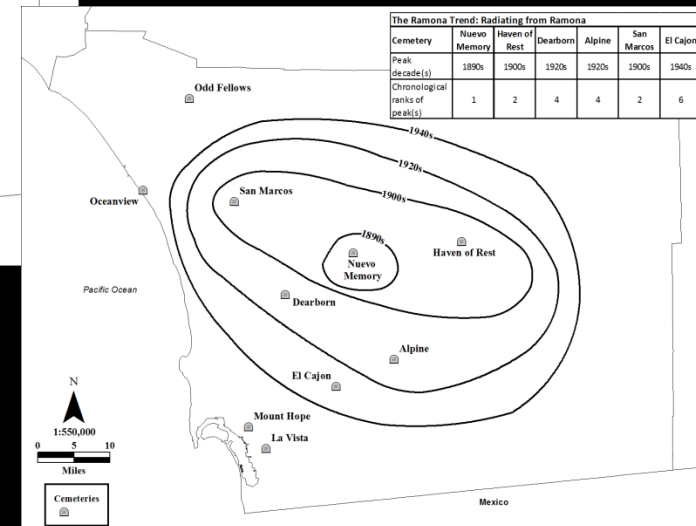
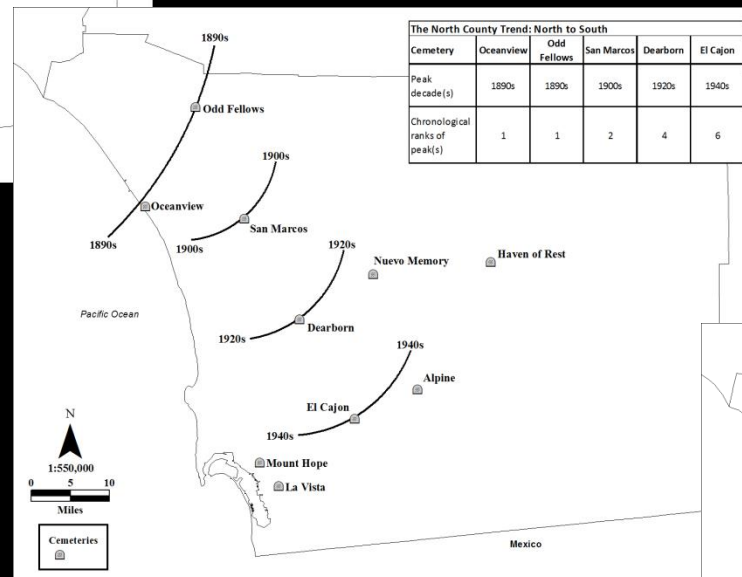
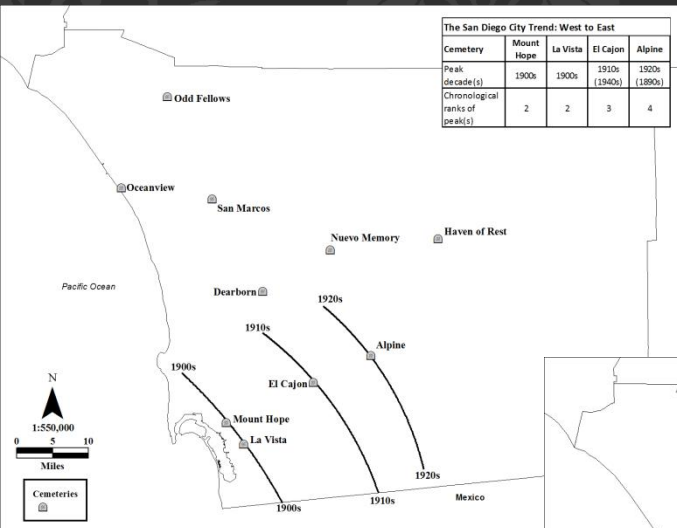
- Modern brass thefts at various cemeteries and SDSU Aztec Bowl

WHERE IS THE CENTER OF SAN DIEGO (IN TERMS OF GRAVESTONE CHANGE)?



THREE CENTERS OF CHANGE

- Spatial seriation
- Vectors of change
- Multi-centered modeling



- Stepwise regression results
- Issues of resistance and community boundaries